

Installation Instructions & Use Recommendations

New FMS BT Amplifier

These instructions must be read carefully and thoroughly **before** beginning work. FMS Solutions, LLC accepts no liability for damage caused by failure to observe the installation instructions or use recommendations.

Installation of this accessory does not change the factory specified load limits for saddlebags or radio box.

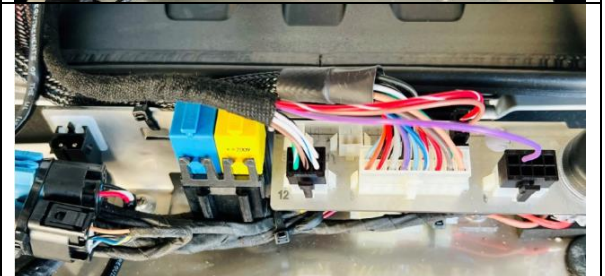
FMS has developed a New BT audio amplifier to enable playing music or instructions from your cell phone, through the motorcycle fairing speakers. The new BT amp installs with Velcro to the inside of the radio box lid.

Note: Complete your wiring connections first to ensure your cable flows properly. Only then should you secure the BT amp into position.

Securing the harness to the bracket (if used) to keep the plugs and cables from being flexed when the radio box lid is opened and shut. Observe the routing of the cables along with any other equipment installed on the motorcycles so that the cables have an easy route up into the radio box lid, being carefully to ensure that they don't kink or snag other cables. Remove the mating Velcro strip from the BT amplifier – use this to secure the amplifier to the radio box lid. An adhesive pad is provided to create a "soft" capture of the cables, but don't pull the cable tie tight – allow the cables to slide within that cable tie. Observe what happen as the lid closes to ensure that the cables will not be damaged / kinked.



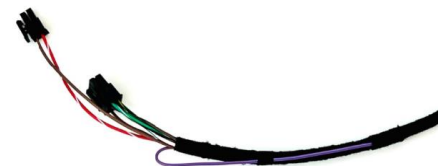
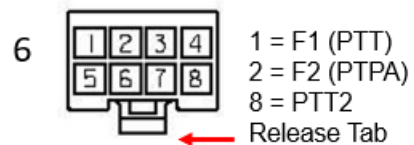
Connect the cables at the plug strip. Plug speaker plug into the 6X speaker plug #12 that violet wire and run that to the specific location on the helmet headset interface plug #6. Plug power into lead specified. All recommended power sources are timed outputs, so you can leave BT Amp "ON" and power will shut-down after 30 minutes after ign-OFF.



Ideally, use one of the three authority momentary switch buttons (F1, F2 or PTT2) if not already in use. These switches apply +12v to the pin when pressed at the Helmet Headset Interface Plug. Untape the violet wire from the bundle to connect to the helmet headset interface plug. Insert terminal with crimped side facing release tab (directional) into the available position as noted at right.

Note: PTT2 is not momentary as delivered by BMW. Future software versions can be recoded by the dealer to momentary. If F1 and F2 are being used, install the auxiliary momentary button.

Helmet Headset Interface Plug

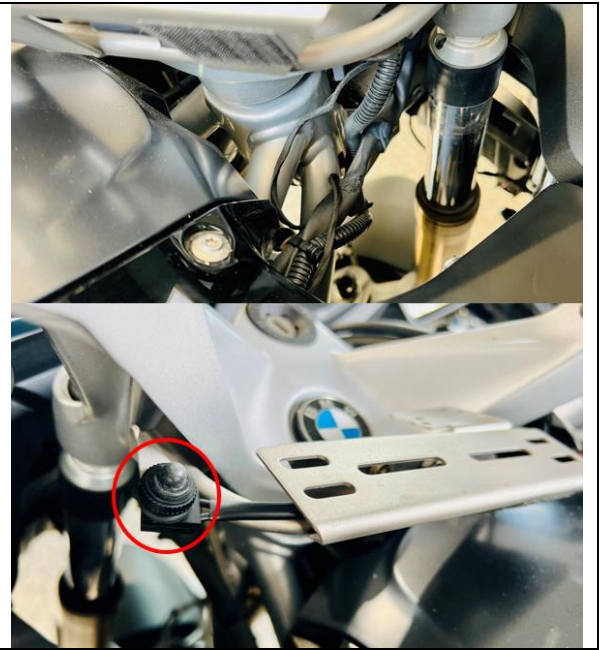


Along the right side of the steering head, two capped plugs are tied to the wiring harness. One is a plug with a white & grey center (civilian horn) / the other is the extension cable you want. This has a plug with a white & black center. Remove the protection cap from this plug, carefully cut the tape wrapping holding it to the wiring harness, and extend it out.

Prior to mounting the momentary push button switch, route that plug lead up and through the opening in the radio head mounting bracket. Snap the connector together and then slide that connector into the bracket opening.

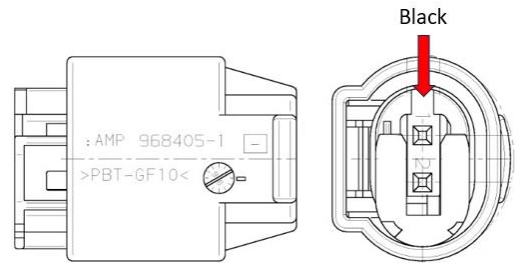
Unscrew the cap to the switch and install it in the small ring opening on the left side of the bracket. The black rubber washer stays with the switch on the underside of the bracket. The rubber nut/cap screws on top.

Secure the cable lead using provided cable ties once you have checked full left / full right lock movement of the handlebar so no cable is strained.



Plug identification. Look for middle section to be black with the coding "key" straight.

The civilian horn plug cable is a code B plug with a center insert being grey – do not use! Not activated on US police versions other than CHP.



Operation:

The slide switch turns the power ON or OFF as shown.

Power LED: Green (powered, unmuted)
Amber (Powered, muted)

BT LED: Red/Blue Alternating = Pairing
Blue Blinking = Paired

Pairing To Phone: Activate switch and watch BT LED flash Red/Blue. Phone name is FMS on BT phone listing.

Note: Reacquiring the BT amp can take up to 45 seconds.

Base Level Volume (Red) Button: This determines the volume the amp will start playing at. Press button to increase volume to set volume level when starting or after release of mute. If you went past the level you desired, long press to restart at base level. The balance of available amplifier volume will be activated using the momentary push button at the handlebar area.



Push Button Operation

The actions below apply to either the auxiliary push button switch shown at right, or if one of the handlebar switches (F1, F2 or PTT2) are being used.

Single Press = Increase volume. Each single press will continue to increase volume until maximum volume is reached, where a chime will sound.

Press & Hold = Mute Volume. To mute the volume or restart because you passed the level you desired, press and hold the button. This will reset the volume back to the “base volume level” set with the red push button on the amplifier box.

Quick Double Press = Advance Play List. A quick double press will advance to the next song on your playlist. It may take a few tries to master the double press speed.



Feedback: Thank you for your purchase and we welcome your feedback as we too want to make every accessory exceed your expectations. Report any comments, suggestions, problems or concerns to FMS Solutions, LLC at info@fmsaccessories.com .

Thank you!

About FMS Accessories

FMS Solutions, LLC Limited Warranty

FMS Solutions, LLC warrants to the first retail purchaser of new FMS Accessory products, to be free from defects in materials or workmanship, for a period of three (3) years from the original date of purchase as noted on the FMS Solutions, LLC invoice or original dealer invoice, except for paint and powder-coated finishes, which are warranted for the first 12 months only. LED lights from Fenix, Inc., Code 3, Inc. and Littlite are covered for 5 years by their manufacturer's respective warranties – processed through FMS Solutions, LLC.

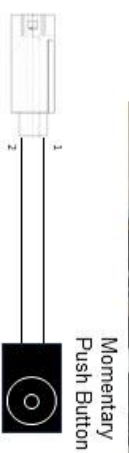
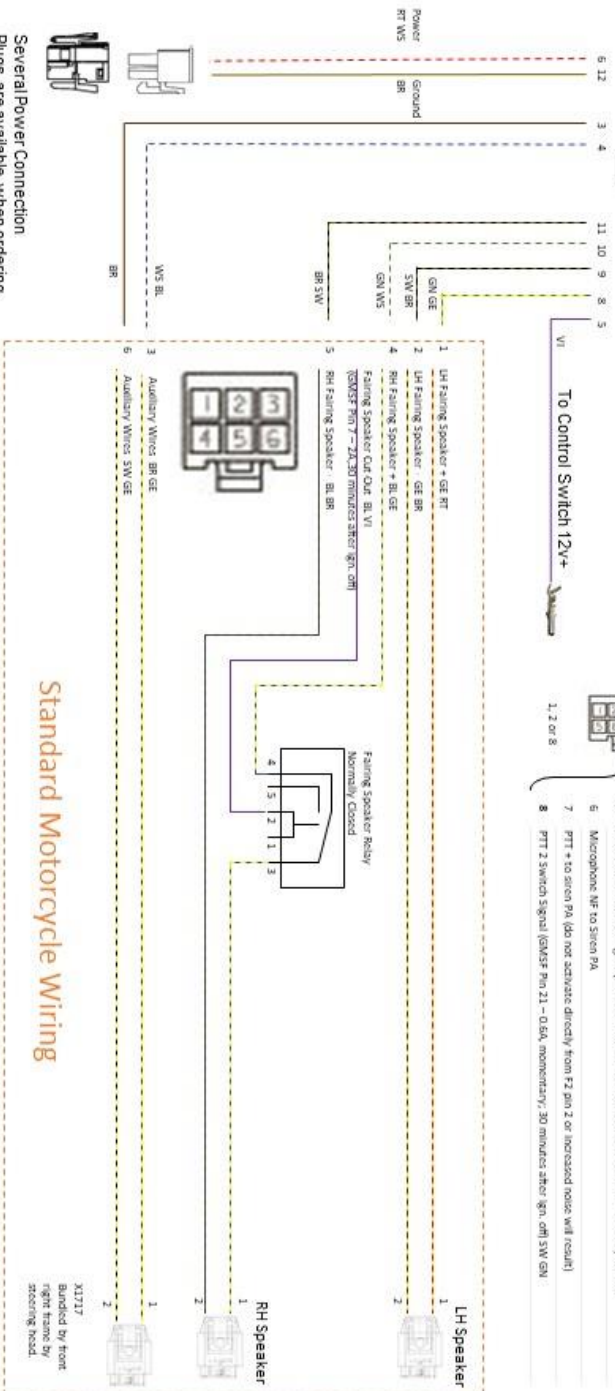
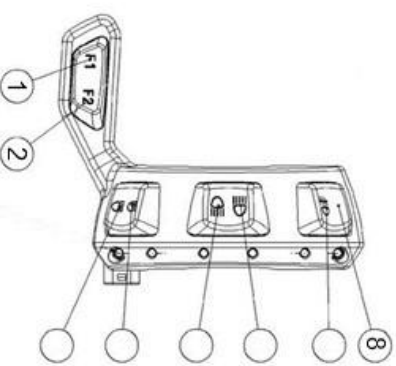
This warranty extends only to the FMS accessory and does not include: damage caused by accidents or abuse; incorrect installation; labor to diagnose, remove, repair or replace; any consequential damage or loss of use. Any FMS Accessory suspected of being defective should be returned to FMS Solutions, LLC along with a copy of proof of purchase and warranty request form available on the FMS website. FMS Solutions, LLC will determine if the FMS accessory has a warrantable defect, and if so, will repair or replace the item and return it to the sender without charge. The decision to repair or replace said item is solely the prerogative of FMS Solutions, LLC.

Note: Police motors can operate in a very rough environment since police motors are a “tool”. They can be dropped, knocked-over, etc. without concern as the officer has a job to do and determines what is necessary at any given moment. Warranty is for defects in materials or workmanship. Therefore, the ability of an item to become broken or damaged does not mean it is warranty ... it just means it is broken or damaged and in need of repair or replacement. No manufacturer warrants their products to be indestructible. Any questions should be directed to info@fmsaccessories.com .



New FMS BT Amplifier Connection Diagram

Control Switch Functions:
 Short Press = Volume Up
 Long Press = Mute
 Double Press = Next Track on Phone
 Base Volume Preset (red button) to establish base level of volume each time the unit starts / after mute.
 ON / OFF Power switch turns the BT Audio Amp off or on. We recommend connection to a timed circuit to avoid shutting the unit off each time.



Several Power Connection Plugs are available when ordering. Review your motor for which plugs are available for use.